

# 2004 Annual Report





## Mission Statement

The AALAS Foundation supports educational outreach on the essential role of responsible laboratory animal care and use in science to advance human and animal health.

## Chair's Message



2004 was a banner year for the AALAS Foundation. With your support during the AALAS National Meeting in Tampa, over \$35,000 was raised for the AALAS Foundation. The Foundation recognized a record number of corporate and branch contributors in Tampa. During the General Membership Meeting, 32 plaques

were presented to those in the Patrons through President's donor levels. The Foundation also gave special thanks to those who became Individual Platinum and President's Level Contributors (donating \$500 or more from their personal budgets) since the 2003 National Meeting in Seattle, including those new participants during the Tampa National Meeting. They were presented with a one-inch, 10K white-gold plated lapel pin with a small diamond accent.

Our goals for the future are to increase the public outreach programs that the Foundation supports and to build the Foundation's financial position to allow for support of additional outreach programs.

It's the generous donations of our contributors that have allowed the Foundation to build its financial position and support the outstanding public outreach and educational programs about humane laboratory animal care and use available today. Investing in your future and the future of laboratory animal science will not go unnoticed. This publication gives us the opportunity to say "thank you" for your continued support of the Foundation.

We hope your interest in the AALAS Foundation will continue through promoting the mission of the Foundation to your peers, using our available materials in your personal public outreach efforts, and working with us in the future to bring about new initiatives in public outreach and education.

On behalf of the AALAS Foundation Board of Directors, I thank you for your support of and dedication to the future of the AALAS Foundation.

A handwritten signature in black ink that reads "J. Easley".

Jeff Easley  
Chair, AALAS Foundation Board of Directors

## Executive Director's Message



One of the most rewarding aspects of my role as executive director of both AALAS and the AALAS Foundation has been being a part of the extraordinary growth of the Foundation. The Foundation has experienced tremendous support from the laboratory animal science community, particularly the institutional and commercial AALAS members. Within the past year, the support from individuals and AALAS branches has strengthened. Another rewarding aspect is working with the Foundation chair and directors. Individually and collectively, this group is dedicated and willing to dig in and do whatever is required. Funds allocated in the past year have increased both in amount and in diversity of projects. The Foundation is becoming a leading force for public outreach and is increasing recognition of the commitment of those who work in laboratory animal science to educate the public about responsible care and use of animals in the research setting.

I am taking this opportunity to thank Judy Grisamore for her contributions to the AALAS Foundation as chief operating officer from 2002 until April 2005. We wish her the best in her new life in Dallas, Texas. Please join me in welcoming John McCutchen, director of member relations and marketing, to the AALAS and Foundation staff. He is responsible for coordinating the staff efforts for the Foundation and brings specific expertise in marketing to the Foundation. The Foundation is supported by the AALAS staff, and virtually all AALAS staff plays a role in the work of the Foundation. Sheryl Duncan, development specialist, and Jill Worley, community services coordinator, are both partially funded by the Foundation and devote much of their time to Foundation activities.

Thank you all for your financial support, your time, and your talent!

A handwritten signature in black ink that reads "Ann Tourigny Turner".

Ann Tourigny Turner, PhD, CAE  
Executive Director, AALAS Foundation

# 2004/2005 AALAS Foundation Board of Directors

## Directors-at-Large

Michael A. Coiro, Sr.  
CEO, Allentown Caging Equipment Co., Inc.

Helen E. Diggs, DVM  
Director, Univ. of California-Berkeley

Jeff Easley  
2005 Chair, AALAS Foundation  
Marketing Director, Harlan

George S. Gabriel  
CEO, Lab Products, Inc.

Robert K. Jackson, DVM  
Director, Bristol-Myers Squibb

Charlie Kammer  
Retired Sales Representative

M. Lynn Loney, MS, RLATG, RVT  
Consultant, Bayer Crop Science LP

Cynthia A. Pekow, DVM  
Chief, Veterinary Medical Unit, VA Puget Sound Health Care System

Scott E. Perkins, VMD  
Director, Tufts—New England Medical Center

Kenneth B. Shapiro  
2005 Vice Chair, AALAS Foundation  
National Sales Manager, Pharmalac

Dennis M. Stark, DVM, PhD  
Executive Director, Veterinary Sciences, Bristol-Myers Squibb

Kristina Stephens, MA, LATG  
Management Consultant

## AALAS Board of Trustees Representatives

Jack R. Hessler, DVM, Secretary/Treasurer

Ralph E. Hornickel, BS, RLATG, AALAS BOT  
Facilities Manager, University of Louisville

Valeri Lansford, RLATG, AALAS BOT  
Lab Sales Consultant, Edstrom Industries, Inc.

## Legal Counsel (ex officio)

Tom Boerschinger  
Attorney-at-Law, Alan Amos & Associates

## Executive Director AALAS & AALAS Foundation (ex officio)

Ann Tourigny Turner, PhD, CAE

## Staff

John McCutchen, CAE, Staff Liaison (began 6/1/05)

Sheryl Duncan, Development Specialist

Jill Worley, Community Services Coordinator

Judith Grisamore, Chief Operating Officer (until 6/1/05)



# AALAS Foundation Projects and Programs Supported During 2004

## Public Outreach

The AALAS Foundation contributes to the public's awareness of ethical issues in the use of animals and the advances made that help both animals and people. There has been an ongoing educational effort, with particular emphasis on schools, to inform the public about the knowledge gained through the use of animals in research.

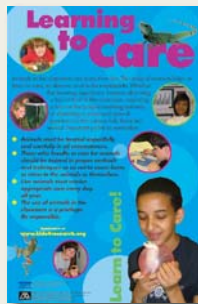
### "Together for Life...Every Day of the Year" Classroom Calendar



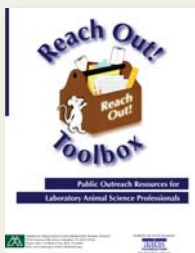
A joint project of Millennium Pharmaceuticals, Inc., and the AALAS Foundation, this full-color, two-sided 17" x 33" calendar/poster is a beautiful, multi-purpose outreach tool for students and teachers in grades 6-10. The calendar's objectives are to increase awareness of the benefits people and animals receive from medical research using animals, pique curiosity about current issues within the biomedical research field, and teach students more about laboratory animals and the magnificent contributions they have made to

our lives.

**"Learning to Care" Poster**—The full-color poster promotes stewardship, responsibility, and respect for animals used in any classroom environment—from the third-grade level through college. The one-sided poster displays images of animals common to a classroom and has colorful photos of students interacting with animals in a classroom environment.

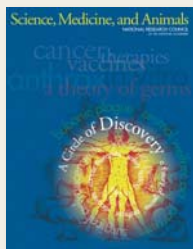


### Reach Out! Toolbox



Distributed during the AALAS National Meeting in Tampa in October 2004 and then made available through the AALAS and AALAS Foundation web sites, the "Reach Out! Toolbox" materials offer motivation and encouragement for AALAS members truly interested in learning how to reach out to the public about biomedical research using animals. The contents provide AALAS members with tools and resources they need to conduct successful public outreach sessions within their communities and supply guidelines for planning, organizing, and conducting an Animal Research Fair at the facility or branch and district meetings.

**Science, Medicine, and Animals: A Circle of Discovery**—The AALAS Foundation participated in funding the printing and dissemination of this publication for middle- and high-school students. Produced by the Institute for Laboratory Animal Research (ILAR), the publication's objective is to reach teenag-



ers who are frequently targeted by the animal rights movement with false and misrepresented information in an effort to re-educate them about the contributions of animals to biomedical research, basic research, and safety testing. The publication also discusses the laws that protect lab animals and the ethical underpinnings of their humane use in research.

**Survivors – Phase 2**—Building on the success of the Foundation for Biomedical Research's (FBR) first program of this type, Survivors—Phase 1 (which assisted practicing animal veterinarians in educating pet owners about the vital role research plays in prolonging the health and life of their pets), this phase expands the core message to include equine medicine and to actively engage large animal veterinarians. The program will continue to educate and enlighten Americans about the vital contributions being made by laboratory animal medicine.

### Outreach at Teacher Conferences

During 2004, AALAS staff exhibited at the annual meetings of the National Science Teachers Association (NSTA), National Association for Biology Teachers (NABT), Future Farmers of America (FFA), and the National Association of Agricultural Educators (NAAE) to provide teachers and students with educational and informational resources promoting the awareness of research animal care and the benefits of biomedical research. Teacher workshops were conducted at several of these meetings.



### "Quality Animal Care Equals Quality Science" Note Cards

The AALAS Foundation funded the production of these 4" x 5" note cards featuring four different full-color animals used frequently in biomedical research. Each card contains positive messages about animal research and its benefits to society, as well as medical breakthroughs specific to each of the animal species. The cards, which are appropriate for any occasion such as birthdays, thank-yous, and get-well greetings, are the perfect way to educate the public about the use of animals in biomedical research.

### "Appropriate Lab Animal Care and Use Advances Medical Science" mailing labels

The AALAS Foundation designed and produced these sheets of one-inch, self-adhesive mailing labels available at no cost in small quantities. The Foundation's web address is included. It is hoped that the use of the labels by our contributors on their business and personal mailings will promote our message.

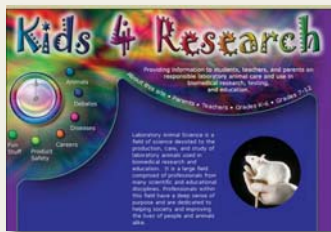


**Public Outreach Training**—The AALAS Foundation enables AALAS members to effectively use public outreach materials in the classroom or in speaking to other groups about laboratory animal science. Following the completion of the public outreach training instructional video, “Reach Out! Educating the Public about People and Animals in Biomedical Research,” over 300 copies were sent to AALAS members. The video, which reviews techniques and proven methods for reaching school children from kindergarten through high school, consists of three one-hour sections: “Public Outreach Training for Lab Animal Science Professionals,” “Classroom Presentation—Secondary Level,” and “Classroom Presentation—Elementary Level.” In 2003, the contents of the “Reach Out!” video were converted into DVD format to make the product more accessible to teachers, students, and AALAS members. DVDs are distributed at all science teacher association meetings and at various AALAS functions.

**Public Outreach for School-Aged Children**—With a renewed \$10,000 grant from Pharmacal Research Laboratories, the AALAS Foundation supports projects directly reaching students in the classroom.

**Experimental Biology (FASEB), AVMA, Neuroscience, and Society of Toxicology National Meetings**—Over the past few years, AALAS exhibited at the annual meetings of these organizations and displayed Foundation-supported public outreach materials. The attendees were researchers, scientists, and veterinarians from around the world, many of whom have public outreach interests, as well as a need for outstanding materials to use in their efforts.

**Kids-4-Research Web Site**—Funded with a \$100,000 grant from Charles River Laboratories, the web site ([www.kids4research.org](http://www.kids4research.org)), provides age-appropriate material, including educational games, activities, and graphics. It is widely used by teachers and others to stimulate interest and understanding about laboratory animal science. All public outreach materials produced by the AALAS Foundation are PDF files and can be downloaded by anyone at any time.



**Rat Anatomy Reference Sheets**—This two-sided, full-color sheet, for school students to use as a reference tool during dissection classes, serves as a desktop anatomy guide and an outreach tool promoting the importance of the rat in biomedical research. It also promotes the necessity for the respect and responsible stewardship of animals in general. The front side contains five labeled body system images from the current AALAS rat anatomy poster, and the back contains interesting facts about the rat and its contributions to medical research and information on the general respect for and the stewardship of animals.

**“Quality Animal Care Equals Quality Science” Poster**—The full-color, 11” x 17” poster serves as a direct marketing piece focusing on the high level of attention, caring, and dedication laboratory animal personnel have for their animals,

and how that directly impacts the research outcome. It also focuses on how the AALAS International Laboratory Animal Technician Week recognizes the importance of technicians in the field.

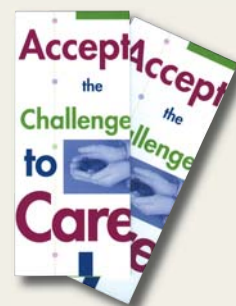
**Larry the Lab Mouse Coloring Book**—The AALAS Foundation participated in funding the printing of this coloring book designed by iiFAR to teach younger children how animals are cared for in a research laboratory.

**Kids 4 Research Begins @ Home**—To promote research animal care to the youth of our AALAS members who attended the AALAS National Meeting in Tampa, the AALAS BOT approved free registration for youths 18 years of age or younger when accompanied by a registered adult. The AALAS Foundation provided each youth with a complimentary T-shirt displaying the AALAS, the Foundation, and the Tampa Public Outreach Pirate logos.

## Careers

As strides are being made in research laboratories across the country, it becomes increasingly more important to attract talented students to the laboratory animal science field. The AALAS Foundation endeavors to help students explore careers in the field with three projects.

**Accept the Challenge to Care**—This video module, funded by an \$80,000 joint grant from Novartis Pharmaceuticals, Inc. and Novartis Institute for Biomedical Research, Inc. (NIBRI), includes a video, student brochure, and curriculum guide designed for teachers at the middle and high school level. The video promotes career opportunities in the field of laboratory animal care and biomedical research. It is available to schools at no cost through AALAS. Thousands of these video modules have been distributed at science teacher meetings over the past few years.



**“A Career in Caring” Poster**—Thousands of these colorful, two-sided posters have been distributed to AALAS members and the public. The poster, developed by the AALAS Committee on Technician Awareness and Development (CTAD) and AALAS staff, serves a dual purpose—as a marketing tool to promote the annual AALAS International Laboratory Animal Technician Week event and as a public outreach piece promoting careers in laboratory animal science. The poster highlights the field of lab animal science and the significance of biomedical research to students and teachers, while also emphasizing the importance of technicians as part of the research team. The poster’s emphasis is to attract junior and senior high school students to the field of laboratory animal science.

**“Careers in Biomedical Research” Brochure**—A joint project between the California Society for Biomedical Research and the AALAS Foundation, this comprehensive brochure will cover a wide range of career options in biomedical research. The objectives of the brochure are to encourage youth to seek careers in biomedical research, to educate



teachers and counselors about career options, and to promote an awareness of animal research and its benefits. This brochure will be distributed as part of the "Accept the Challenge to Care" careers video program.

## Education and Training

Knowledge has advanced rapidly within the field of laboratory animal science, and it is essential to provide personnel with educational programs and materials to keep them well trained and to enhance the level of research being performed in the laboratory. Toward that, the AALAS Foundation has supported education and training with these programs.

**AALAS Learning Library (ALL) Web-Based Training**—Funded by a \$125,000 grant from Merck & Company, Inc., AALAS is developing web-based training courses on animal research bi methodologies for common laboratory animal species on the AALAS Learning Library ([www.aalaslearninglibrary.org](http://www.aalaslearninglibrary.org)). The course design will focus on delivering brief vignettes with streaming video presentations, which will allow learners to focus on training related to specific procedures of interest. A script for a course that is currently under development is titled "Working with the Laboratory Rat." The course will cover topic areas such as regulatory requirements, routine care, animal identification, intravenous injection, blood collection, anesthetics and analgesics, clinical signs of illness, and euthanasia. The course will be structured similar to the "Working with the Laboratory Mouse" course that is currently on the AALAS Learning Library.

**CD-ROM Interactive Software Training**—With a \$100,000 grant from Merck & Company, Inc., the CD-ROMs to accompany the *ALAT Training Manual* and the *LAT Training Manual* were produced in 2000 and 2003, respectively. After the completion of the *ALAT Interactive CD*, the Educational Resources Committee (ERC) designed a new approach for this family of training manuals related to CDs. The CD-based training courses

(referred to as companion CDs) take an interactive approach to learning that allows individuals to work through the manual at their own speed, answer questions about each section, work through case studies, and review material as often as needed. The companion CD format includes an audio-recording of the manual as a narration, and the audio tracks are used on the CD and will be used on the Web (LAT courses on the AALAS Learning Library). The ERC revised the *ALAT Companion CD* based on the companion format and replaced the *ALAT Interactive CD* which was released in August 2004. The *LATG Companion CD* will be completed in 2005.



**Student Science Literacy Workshop: Development and Dissemination**—During 2003 and 2004, the Pennsylvania Society for Biomedical Research (PSBR) developed and disseminated an easy-to-use workshop package based on the objectives of the Student Science Literacy Workshop, which was designed to bring students to academic and pharmaceutical company animal research facilities for an educational workshop and tour of the facility. PSBR developed a turn-key, step-by-step template for setting up and conducting the workshop; a CD with the interactive program; a script; all materials; a list of resources; and program evaluation materials.

**Elizabeth R. Griffin Foundation: Zoonosis Training**—The AALAS Foundation and AALAS partnered with a \$60,000 funding from the Griffin Foundation to provide readily accessible training via video/web training to research staff working with laboratory animals, as it relates to prevention of nonhuman primate-related zoonotic diseases. The training module uses monkey-borne B virus as an example of a zoonotic disease, with other agents of animal-borne transmissible diseases and allergies also covered. Videotaping and the narration were completed in January 2004 at the University of Texas Health Science Center and MD Anderson Cancer Center in Houston. The final product was completed in February and is now available in two formats, DVD or VHS, and is offered at no charge upon request within the United States. The course "Health Risks and Safety Procedures for Working with Nonhuman Primates" went online on the AALAS Learning Library in March 2004 after the course was enhanced with content additions and images produced from the video footage.



**Request for Proposals (RFPs)**—In an effort to serve its mission and the laboratory animal science community, the AALAS Foundation developed an RFP to attract proposals that:

1. are designed to implement an innovative educational/outreach program
2. enhance awareness and understanding of animal welfare and care in laboratory settings
3. have a purpose, activities, and products that focus on a specified population (e.g., research scientists, science journalists, home-school teachers, research administrators, physicians, or research foundations) who are perceived to be neutral to animal-based research but who are opinion leaders within the greater society.

The AALAS Foundation expects to award funds to at least one or two outstanding proposals per year.

## Financial Statement

### Assets

#### Current Assets

Cash	\$297,181
Pledges Receivable (current portion)	\$129,870
Prepaid Expenses	\$1,123
Investments	\$410,695
Pledges Receivable (less current portion)	\$286,035

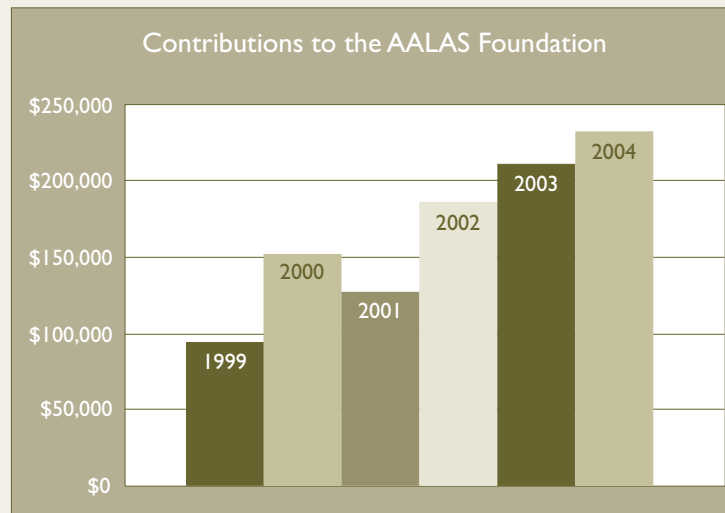
### Liabilities and Net Assets

#### Current Liabilities

Due from/to AALAS	\$38,367
Grants Payable	\$31,850

#### Net Assets

Unrestricted	\$559,713
Temporarily Restricted	\$283,977
Permanently Restricted	\$210,997



## 2004 Contributors to the AALAS Foundation

The AALAS Foundation gratefully recognizes these companies, organizations, and branches that made financial commitments or contributions to the future of laboratory animal science during 2004 at the Patron, Founders, Benefactors, Supporters, Friends, and President's recognition levels.

### Patron Corporate Contributors

Our special thanks to the companies, organizations and branches that renewed a gift or five-year pledge at the current or higher recognition level. These donors are our current AALAS Foundation Patron Corporate Contributors.

#### Patron Founders (\$100,000+)

American Association for Laboratory Animal Science  
Merck & Co., Inc.\*

#### Patron Benefactors (\$50,000+)

Lab Products, Inc.\*  
Taconic Farms, Inc.\*

#### Patron Supporters (\$25,000+)

BioMedic Data Systems, Inc.\*  
Edstrom Industries, Inc.\*  
Life Science Products, Inc.\*  
Novartis Pharmaceuticals  
Priority One Services, Inc.\*

#### Patron Friends (\$10,000+)

Allentown Caging Equipment, Inc.\*  
Pharmaceutical Research Laboratories\*  
Purina Mills, Inc.\*  
Andersons/Bed-o'cobs\*

#### Patron President's (\$1,000+)

Metro New York Branch  
National Capital Area Branch

### Corporate Contributors

Our sincere appreciation to the companies, organizations, and branches that made a gift or five-year pledge of \$1,000 or more. These donors are our current AALAS Foundation Corporate Contributors.

#### Founders (\$100,000+)

Charles River Laboratories\*  
Pfizer, Inc.\*

#### Benefactors (\$50,000+)

SoBran, Inc.\*

#### Supporters (\$25,000+)

Bristol-Myers Squibb, Inc.\*  
Glaxo SmithKline Pharmaceuticals, R&D  
Harlan\*

Novartis Institute for Biomedical Research, Inc. (NIBRI)\*  
Tecniplast USA, Inc.\*

#### Friends (\$10,000+)

Ancare Corporation\*  
Britz-Heidbrink, Inc.\*  
Millennium Pharmaceuticals, Inc.\*  
Quip Laboratories, Inc.\*

#### President's (\$1,000+)

A.K. Roseberry & Associates\*  
Animal Specialties & Provisions, Inc.\*  
Biocon, Inc.\*  
Bio-Serv\*  
Buxton Medical Equipment Corp.\*  
Cedar Creek AME, Inc.\*  
Dick Burnham Technical Sales, Inc.\*  
LABREPCO, Inc.  
New England Branch\*  
New Jersey Branch  
sanofi-aventis Bridgewater  
sanofi-aventis Malvern  
Texas Branch\*  
Tuttner USA Co., Ltd.\*  
VRL Laboratories  
World Courier, Inc.

### Special Corporate Supporters

We would like to thank the following companies who worked with the Foundation in 2004 through their support of special events and activities.

#### AALAS Foundation Reception Sponsor (\$17,100)

Harlan

#### Coffee Sponsors (\$500)

Northwestern Systems Corporation  
Ancare Corporation  
VRL Laboratories

#### Reception Supporters (\$200+)

Animal Specialties & Provisions, Inc.  
A.K. Roseberry & Associates  
Colonial Medical Supply  
Harlan  
Lord, Aeck & Sargent Architecture  
Quip Laboratories  
Thoren Caging Systems, Inc.



## Annual Contributors

Our sincere appreciation to the companies, organizations, and branches that made a gift or five-year pledge of up to \$999 and to the individuals who made gifts or five-year pledges. These donors are our current AALAS Foundation Annual Contributors.

### Patron President's Individual Contributors (renewing a gift or five-year pledge of \$1,000+)

M. Lynn Loney\*  
Dennis Stark\*

### President's Individual Contributors (\$1,000+)

Raj Bhalla  
Jeff Easley\*  
George Gabriel\*  
Gary Goldberg  
Robert Jackson\*  
Valeri Lansford\*  
Beth Page\*  
Scott E. Perkins\*  
Ken Shapiro\*  
Gil Slater\*  
Judith T. Snow\*

### Platinum Contributors (\$500+)

Deb Benner\*  
B. Taylor Bennett\*  
Thomas H. Boerschinger\*  
Kenneth R. Boschert\*  
William R. Clarke\*  
Thomas Cline\*  
Wayne DeSantis\*  
Deb Donohoe\*  
Sonia Doss\*  
Craig Frisk  
Pam Grabeel\*  
Judith Grisamore\*  
Christie Hart\*  
Dennis Hartelust  
Gail A. Heidbrink\*  
Jack Hessler\*  
Margaret Hogan\*  
Ralph Hornickel\*  
Amy S. Ingraham  
George Irving\*  
Bruce Kennedy\*  
Stacy LeBlanc\*  
Steele F. Mattingly  
Michael McGarry\*  
Leticia McGuffey\*  
Ronald M. McLaughlin\*  
Laura Mistretta\*  
Kathleen Murray  
Karen Norton\*

Cindy Pekow  
V. H. "Chip" Price\*  
Lisa K. Secrest\*  
Richard C. Simmonds\*  
Carol St. Jean\*  
U. Kristina Stephens\*  
James Taylor\*  
Ann Tourigny Turner\*  
William Webster\*  
Marc Willis\*  
Dexter Wilson\*  
John Young\*  
Bristol-Myers Squibb/Wallingford  
Ken Robbins Productions, Inc.  
Southeastern Branch

### Sterling Contributors (\$100-499)

Curtis A. Black\*  
Kenneth R. Boschert  
Dawn Conover  
James E. Corbin  
Sharon A. Cugle  
Thomas E. Darby  
Helen Diggs  
Fred A. Douglas  
Heidi A. Dulac  
Marion A. Hammarlund  
Debra Hickman  
Todd A. Jackson  
Charlie Kammer  
J. Malcolm Kling  
Judith Kugler  
Valeri Lansford  
Jane Mackta\*  
Carl E. Miller  
Kathryn H. Nepote  
Christian E. Newcomer  
James B.D. Palmer  
Richard C. Simmonds  
Cathy L. Smith  
Joanne M. Smith  
Mark A. Suckow  
Johann C.F. Thiel  
Melissa A. Trowbridge  
Anna M. Van Heeckeren  
Robert H. Weichbrod  
Tina M. Zima  
Appalachian Branch  
Delaware Valley Branch  
Louisiana Branch  
New England Branch

Quip Laboratories  
San Diego Branch  
Scientek Technology Corp.  
Upstate New York Branch

### Contributors (\$1-99)

Harry Acosta  
Jonathan L. Alderman  
Adam J. Bakowski  
Roy L. Barriere  
Samm C. Bartee  
Doreen H. Bartlett  
Margaret A. Batchelder  
Lucretia M. Batten  
Lorraine Bell  
Stephen Benigni  
Bob Bentzinger  
Pamela C. Berger  
Sarah E. Birch  
Thomas H. Boerschinger  
Vicky Boppert  
Melissa A. Borde  
Donald Bordine  
Christine A. Bosgraaf  
David W. Brammer  
Paul H. Bramson  
Daniel J. Brown  
Gary A. Brown  
Lisa J. Brown  
Thomas F. Bryant  
Tanya H. Burkholder  
Guy Burn  
Wendy P. Burns  
Terry Burns-Heffner  
Britt M. Callahan  
Yimer Callejas  
Ralph Callicott  
Donna D. Carey  
Jefferson K. Childs  
William R. Clarke  
Daria O. Cloyd  
Candice D. Combs  
Faith W. Conkle  
Laura A. Conour  
Regina M. Correa-Murphy  
Penny M. Coshatt  
Amanda Dalton  
Juan De Leon  
Janet Dell-John  
Diane Dieter  
H. Douglas Dinkel

\*Five-year pledge



Nicole Duffee  
Jeff Easley  
Kimberly S. Edgar  
Desiree A. Ehleiter  
Lisa D. Emmons  
Javelyn R. Evans  
Tina M. Fay  
William T. Ferner  
Carol A. Fickett  
Valerie M. Fiolkoski  
Richard E. Fish  
Kurt T. Flynn  
Patricia L. Foley  
Keith A. Fowler  
Brian Freitas  
Linda K. Fritz  
Merrill G. Frost  
Linda K. Fulton  
Montip G. Gettayacamin  
Mary Lou Gianni  
William T. Gietz  
Vicki Giroffi  
Karol B. Godwin  
Donna L. Goldsteen  
Tamara Goodman  
Bradford S. Goodwin  
Steve Green  
Wetonia Grenthe  
Judith Grisamore  
Neil A. Grove  
Robert E. Gump  
Katherine M. Gungon  
Mary K. Hagler  
Toby Halpern  
Lisa M. Harms  
Susan M. Hart  
Christie Hart  
William L. Heckt  
Gail A. Heidbrink  
Terry A. Hewett  
Timothy B. Hidell  
Brenda P. Hill  
Steven Hill  
Cindy M. Hoorn  
Darrell E. Hoskins  
Mary Humphries  
Chandra Inglis  
George W. Irving  
Susanne Jendrowski  
Charlie Kammer  
Andrei E. Kasarda  
Robin M. Kavanaugh  
Lynn S. Keller  
Kristen Kerber  
Angela P. King-Herbert  
Curtis M. Klages  
Melissa A. Koenig  
Nancy Gail Kohler

Peter J. Kong  
Patty A. Kowal  
Karen E. Krause  
Jane Wall Lacher  
Michael M. Laffins  
Cynthia D. Lang  
George W. Lantrip  
Tami P. Lass  
Kathryn Laster  
Tim Lawson  
Hector Leon-Toledo  
Linda Lewis  
Nicole A. Lilly  
M. Lynn Loney  
Tom Longanbach  
Kim Longnecker  
Karen A. Lott  
Laura Lott  
Dorothy Loud  
Randy C. Lum  
Chris Lyons  
Anne M. MacLarty  
James D. Macy  
Sean Maguire  
Crystal T. Malota  
Sandi S. Manetta-Soto  
Lisa B. Martin  
Steele F. Mattingly  
Diane E. McClure  
D. Scott McConnell  
Scott A. McConnell  
Ronald M. McLaughlin  
Christine McNickle  
Charles W. McPherson  
Carol S. Mead  
Scott L. Mickelsen  
Glendon R. Miller  
Karrie E. Miller  
Linda Ann Miller  
Robin M. Miller  
Andrew Minenna  
Marsha E. Moon  
Eileen M. Morgan  
Allison Mueller  
Joan W. Muhoro  
Kathleen Mullin  
Kho Nguyen  
Carol J. Nichols  
Marek A. Niekrasz  
Kevin C. Ohair  
Tara G. Ooms  
Janet Osborne  
Mohamed Osman  
Nichole R. Padgett  
Richard Padilla  
Edivinia S. Pangilinan  
Shiree D. Parenti  
Angela Parham

John A. Park  
Cheryl Pater  
Elizabeth H. Pelletier  
Nathalie H. Perkins  
Scott E. Perkins  
Anita J. Piccolie  
Kelly P. Prevost  
Lucinda K. Prevost  
V. H. "Chip" Price  
Abraham Quezada  
Rick T. Ramsey  
Joan T. Reilly  
Gregory R. Reinhard  
John Cody Resendez  
Erin P. Ribka  
Pedro Rico  
Kathleen Rider  
Jennifer Roach  
Corby-Lyn Roberts  
Frederick M. Rock  
John C. Rogers  
Molly L. Romick  
Debra J. Rood  
Robert E. Rose  
Carol A. Rowehl  
Karen Ruffo  
William C. Satterfield  
Rick Saucedo  
Mary Sauer  
Kimberly A. Scamardo  
Denice M. Schafer  
Marian J. Schmid  
Matthew Schoeu  
Joanne E. Schoonmaker  
Tanja Schub  
James J. Schupsky  
Daniel R. Schwartz  
Lisa K. Secrest  
Lucy H. Senter  
Kenneth B. Shapiro  
Max S. Shapiro  
Linda C. Sharpless  
Mary Jo Shepherd  
Michael G. Sidelisky  
Donna Sienkiewicz  
Patricia J. Sikes  
John D. Sims  
Lynelle M. Sisneros  
Barbara Smith  
Judith T. Snow  
William Snyder  
Juan L. Soto  
Sheryl J. Spencer  
Arlene Stanifer  
Rachel Steeper  
Lisa J. Steuerwald  
Mary Ann Stevenson  
David Stock

Pamela A. Straeter  
Sean M. Sullivan  
Lynne E. Swanson  
Charles J. Sylvia  
Kathy Tang  
Ellen R. Taylor  
Kim D. Taylor  
Kami J. Thompson  
Robin C. Thompson  
Roy M. Tietjen  
Ann Tourigny Turner  
Michelle Tussing

Michael Vascellaro  
Michelle Wallace  
Charleen M. Warder  
Craig L. Wardrip  
Mary J. Watach  
Erica Watson  
Patricia V. Watts  
Debra A. Weisbecker  
Deborah A. Wenger  
Mark T. Whary  
Steven E. Whitesall

Christie A. Wilcox  
Kathleen H. Wilkinson  
Melody C. Willey  
Juliet A. Wood  
Jill Worley  
Motoyuki Yoshida  
Yenong Zhou  
Kentucky Branch  
KPT Info Trader Inc  
Mid-Missouri  
Mile High Branch

### Live and Silent Auction Contributors

We thank the following individuals, companies, organizations, and branches that contributed to the Live and Silent Auction fundraisers during the 2004 AALAS National Meeting in Tampa.

Janet Baer  
Lindsay B. Barnes  
Doreen H. Bartlett  
Trageen D. Baumgart  
Jana Baxter  
Robin M. Bell  
Deborah A. Benner  
Lisa J. Brown  
Kevin P. Carroll  
Ronald Dattoli  
Randy J. Deguzman  
Diane Dieter  
Ann Marie Dinkel  
Deborah L. Donohoe  
Julia B. Drake  
Dee Drye  
Alexander L. Durant  
Jose 'Pepe' Figueroa  
Valerie M. Fiolkoski  
Ken Golding  
Terry L. Gorsch  
Jamieson L. Greaver  
Scott Green  
Judy Grisamore  
F. Claire Hankenson  
Christie L. Hart  
Gail A. Heidbrink  
Ralph E. Hornickel  
Larry Iten  
Robert K. Jackson  
Charlie Kammer  
Christopher E. Keller  
Bruce W. Kennedy  
Curtis M. Klages  
Melissa A. Koenig  
Valeri Lansford  
Kathryn Laster  
Stacy A. LeBlanc  
Dawn Linn

Kim Longnecker  
Karen A. Lott  
Jan E. Mabry  
Timothy D. Mandrell  
Leticia McGuffey  
Nancy McLane  
Alice W. McVey  
Scott A. Mischler  
Marsha E. Moon  
Gabrielle A. Morris  
Kathleen A. Murray  
Gary R. Novak  
Jane M. Olin  
Cindy Pekow  
Elizabeth H. Pelletier  
Nathalie H. Perkins  
Barbara Rich  
Lauren J. Richey  
John C. Rogers  
Ardis K. Roseberry  
Paula A. Samalonis  
John D. Sims  
Larkin B. Slater  
Judith T. Snow  
Dennis M. Stark  
Cathy Steffen  
U. Kristina Stephens  
Shannon A. Stutler  
Wutiehaisubachatur  
Ellen R. Taylor  
Roy M. Tietjen  
Ann Tourigny Turner  
Ann & Darrell Turner  
Melinda J. Van Roey  
Jill Worley  
John D. Young  
Acquatic Habitats  
AirNet Express

Appalachian Branch  
Arizona Branch  
Arkansas Branch  
Britz-Heidbrink, Inc.  
Central Ohio Branch  
Delaware Valley Branch  
Florida A&M University  
Florida Branch  
Indiana Branch  
Iowa Branch  
Harlan  
Lab Products, Inc.  
Laboratory Animal Training  
Association (LATA)  
Lithgow Lab Services  
Living Art-N-Life  
Lomir Biomedical, Inc.  
Matrix  
Metro New York Branch  
Mile High Branch  
National Research Council of  
Thailand  
New England Branch  
New Jersey Branch  
Northern California Branch  
Northern Mountain Branch  
Northern Ohio Branch  
Palms to Pines Branch  
Research Triangle Branch  
San Diego Branch  
SCAW  
SEAALAS  
Shepherd Specialty Papers  
Southern Ohio Branch  
Texas Branch  
Three Rivers Branch  
Upstate New York Branch

Allentown Caging Equipment Co., Inc.

