



2011
ANNUAL
REPORT

Chair's Message



Over the past year, the AALAS Foundation has continued our commitment to educate the next generation of leaders about the essential role of animals in research, education and product safety. With the ongoing support of our members, the Foundation continues to find new, innovative ways to connect with students and develop

new public community outreach initiatives.

Thanks to a \$75,000 grant issued by AALAS, a new PR campaign will highlight the compassionate nature of laboratory animal science professionals.

Over the next year, a three-pronged effort will focus on those trained and compassionate individuals, who have dedicated themselves to caring for the laboratory animals. With their help, we are confident we can focus on a positive climate with regard to animal research and laboratory animal science.

We have many exciting things planned for the future including building an on-line portal: 4Research.org. This tool will link our growing arsenal of public outreach resources and ultimately be utilized to launch an improved Kids 4 Research website.

Your steadfast dedication is the fuel needed to empower this next generation of laboratory animal science professionals.

On behalf of the AALAS Foundation Board of Directors, thank you for your on-going support of the Foundation!

Richard Cavallaro
2011 Chair, AALAS Foundation Board of Directors

2011 AALAS Foundation Board of Directors

Richard Cavallaro, 2011 Chair
Director, Charles River

Jane Olin, 2011 Vice Chair
Director, Edwards Lifesciences

Directors-at-large
Curtis Black
Technical Training Coordinator, Covance Laboratories

Dennis E Brown, Jr.
Director, BioReliance

Dr. Cindy Buckmaster, CMAR, RLATG
Associate Director, Baylor College of Medicine

Bill Clarke
Vice President, Animal Specialties and Provisions LLC

Stephen Durkee
IACUC Compliance Administrator, Oregon State University

Kathleen L Smiler, DVM
Consultant

Shannon A Stutler, DVM
Chief - Research Support Division, US Army

AALAS Board of Trustees Representatives
Deborah A. Benner, Secretary/Treasurer
President, Animal Specialties and Provisions LLC

Ray Butler, RLATG
Vet Tech, Novartis Pharmaceuticals Corp

Stacy Wells, RLATG
Training & Technical Services Coordinator, University of Louisville

Legal Counsel (ex officio)

Tom Boerschinger
Attorney-at-Law, Alan Amos & Associates

Executive Director AALAS & AALAS Foundation (ex officio)
Ann Tourigny Turner, PhD, CAE

Staff

Mike Mathy
Foundation Administrator

Liz Rozanski
Foundation Administrative Assistant

Executive Director's Message



One of the most rewarding aspects of my position as executive director of AALAS and the AALAS Foundation has been to participate in the evolution and growth of the AALAS Foundation.

I'm happy to report that the AALAS Foundation experienced another successful year. This success can be attributed to the many individuals, branches, and companies who have helped us to advance our mission to educate the public about the importance of quality laboratory animal care and research.

The AALAS Foundation continues to thrive despite a struggling economy. Due to the generous support of our benefactors, and our investment approach, we are in a strong financial position to continue to expand our public outreach efforts.

In 2011, we made several enhancements to the AALAS Learning Library to meet the demand for online learning opportunities. We not only created an Introduction to Laboratory Animal Science course for high school and middle school students, but also converted the popular Caring for Animals book into an online course.

In addition, the Foundation also launched a Facebook page to allow us to stay connected with members of the laboratory animal science community and share information about our public resources and initiatives.

While our efforts have shifted to online education over the past few years, the Foundation also developed a series of posters that highlight the importance of consumer product safety screening and the compassionate nature of AALAS professionals.

Building on our past success, we have many exciting plans for the future, many of which are detailed in this report. With your support, we can continue to play a leading role in educating students, teachers, and the public about the essential role of animals in research.

Ann Turner, PhD, CAE, FASAE
Executive Director, AALAS Foundation

2011 Projects and Programs

The AALAS Foundation, a 501 (c) (3) nonprofit organization, is an advocate for the responsible care and use of laboratory animals for science and research.

The Foundation promotes the benefits of biomedical research through public outreach with a particular emphasis on schools and ensures that high-quality training and educational programs and materials are available to those working in the profession of laboratory animal science.

School Resources Library

In 2011, the AALAS Education Department in conjunction with the AALAS Foundation launched the School Resources Library in the AALAS Learning Library (ALL). This new portal contains courses tailored for middle school and high school teachers and students.

The Library features an online version of "Frogs: A Comprehensive Course for High School Students."

The course, developed by Dr. Ed Pivorun of Clemson University, teaches high school students about the biology, physiological adaptations, anatomy, evolution, and ecology of frog and toad species in the United States.

Other School Resources Library titles include "Careers for Laboratory Animal Veterinarians" and "Careers for Laboratory Animal Technicians," "Introduction to Laboratory Animal Science," and an online version of the "Caring for Animals in the Classroom" book.

Whyville Boasts over 1.5 Million Game Plays

The AALAS Foundation's Community Animal Research Environment (CARE) in the virtual community of Whyville produced over 1.5 million game plays since its debut in late 2009, including 440,840 game plays in 2011.



Inside CARE, Whyville citizens play a series of games where they create habitats for animals, experience the role of an animal caregiver, and discover how animal research generates cures and treatments for ailments that impact both humans and animals.

Over 40,000 Whyville visitors viewed online brochures in CARE since its inception.

These brochures include topics ranging from careers in laboratory animal science to animal welfare and link to Foundation resources like the Kids4Research website.

Kids 4 Research Website

Funded by Charles River Laboratories, the Kids 4 Research website (www.kids4research.org) provides age-appropriate educational resources that educate elementary, middle school and high school audiences about the importance of quality laboratory animal care and research.



In 2011, a total of 36,964 unique visitors discovered the Kids 4 Research website.

Outreach at Teacher Conferences

AALAS staff and volunteers exhibited at the annual meetings of:

- National Science Teachers Association
- National Association for Biology Teachers
- Future Farmers of America
- National Middle School Association

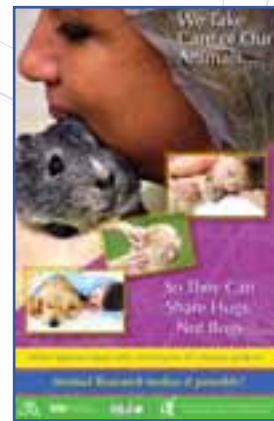
Teachers and students were provided with outreach resources to promote the importance of quality laboratory animal care and research to benefit both human & animal health.

Free Outreach Resources

With the generous support of our donors, the AALAS Foundation now offers complimentary shipping on AALAS Bookstore (aalas.org/bookstore) orders comprised exclusively of Foundation public outreach materials.

AALAS and the AALAS Foundation, with the help of Pfizer, also offers complimentary Animal Research Education and Awareness Program resources to branches and member institutions interested in conducting the program in their communities.

AREA Program resources include a step-by-step event guide, logoed backpacks, student notebooks and pens, and Foundation outreach materials.



Coming in 2012!

Foundation volunteers and staff are working to implement the following public outreach projects in the coming year:

Launch Public Outreach Campaign

In conjunction with AALAS, the Foundation is planning a public outreach campaign designed to highlight the compassionate, caring professionals who've chosen a career in laboratory animal science.



The multifaceted campaign will feature written, audio, and video profiles of

AALAS members and detail the importance of quality laboratory animal care and research.

Revamp Kids 4 Research Website

The Foundation is revamping the Kids 4 Research website as part of a comprehensive plan to expand our portfolio of online resources aimed at middle school and high school students.

In addition to redeveloping the Kids 4 Research website, the Foundation is building a web portal, 4Research.org, to link together our growing arsenal of public outreach websites.

2011 AALAS Foundation Contributors

2011 Corporate Contributors

Founder (\$20,000+)

Abbott
Charles River
Pfizer

Benefactor (\$10,000+)

Lab Products Inc
Tecniplast USA Inc
Thoren Caging Systems Inc.

Supporter (\$5,000+)

Allentown Inc.
Bio Medic Data Systems Inc.
Millennium Pharmaceuticals
Merck
STERIS Corporation
Taconic

Friend (\$2,000+)

Ancare Corp
Andersons/Bed-O'Cobs
Bristol-Myers Squibb
Marshall BioResources
Pharmaceutical Research Labs Inc.
Purina Mills-Lab Diet

Platinum (\$500+)

Animal Specialties and Provisions
Baxter Healthcare Corporation
Bio-Serv
Buxton Medical Equipment
Elm Hill Labs
GlaxoSmithKline R&D
IITC Inc.
Jackson Laboratory
LABEX of MA

LYNX Product Group
Newco Distributors Inc.
The McConnell Group Inc.

President (\$100+)

Allied Trade Association
Agilux Laboratories
Animal Resource Management
Edstrom Industries
Instech Solomon
Molecular Imaging Products Co.
Otto Environmental
Research Supply Company
Ridgland Animal Care Systems
Shepherd Specialty Papers
Tufts University
VetEquip

Advocate (\$1+)

Art's Way Scientific
BioReliance Corporation
Britz & Company
Colonial Medical Supply
Drexel University College of Medicine
Harlan Laboratories Inc.
Rhode Island Hospital
Specialty Operations Solutions

National Meeting Reception Sponsor

Charles River

Auctioneer Sponsor

Abbott

Golf Outing Sponsors

Title Sponsor
Total MRO

2011: By the Numbers

56,309

Foundation outreach flyers, brochures, and materials distributed in 2011. This represented an 18.4% increase compared with 2010.

440,840

Games played in the Whyville Community Animal Research Environment (CARE) in 2011.

47,283

Fundraising total for the 2011 National Meeting.

14,804

Number of CARE brochure views, which link to Foundation resources like the Kids 4 Research website.

36,964

Unique visitors to the Kids4Research website in 2011.

266

Unique Foundation donors in 2011, a 5.5% increase over 2010.

85

Unique auction donors in 2011—one shy of an all-time record! The Foundation received 292 auction item donations, a 19.1% increase over 2010.

Lunch Sponsor

Animal Specialties & Provisions

Hole-in-One Sponsor

LABEX of MA

Transportation Sponsor

Shannon Stutler

Golf Cart Sponsor

BASi

Large Banner Sponsors

Tri-State Biomedical

Ancare

Thoren

TotalMRO

Hole Sponsor

Vet Equip

Millar Instruments

Colonial Medical Supply

Purina Lab Diet

The Baker Company

Bootie Butler

Tri-State Biomedical

Ares Scientific

Pharmaceutical

Tecniplast

Lab Supply

WF Fisher

TotalMRO

E-Z Systems

Alpha Omega Bioservices Inc.

2011 Financial Statement

Current Assets

Cash and Cash Equivalents	\$261,494
Pledges Receivable (Current Portions)	\$35,800
Total Current Assets	\$297,294

Pledges Receivable (Less Current Portion)	\$14,200
Investment, fair value	\$69,374
Other Investments at Cost	\$1,174,362

Total Assets:	\$1,555,230
----------------------	--------------------

Liabilities and Net Assets

Current Liabilities	
Due to Related Party	\$3,454

Net Assets

Unrestricted	
Available for Operations	\$621,364
Funds Functioning as Endowment	\$662,944
Temporarily Restricted	\$267,468
Total Net Assets	\$1,551,776

Total Liabilities and Net Assets:	\$1,555,230
--	--------------------

2011 Branch Contributors

Supporter (\$5,000+)

National Capital Area Branch

Platinum (\$500+)

Southeastern Branch

President (\$100+)

Appalachian Branch
Delaware Valley Branch
Kentucky Branch
Metro New York Branch
Michigan Branch
Minnesota Branch
New England Branch
New Jersey Branch
Northern California Branch
Oklahoma Branch
Oregon Branch
Research Triangle Branch
San Diego Branch
Southern Ohio Branch
Three Rivers Branch
Washington Branch
Wisconsin Branch

Advocate (\$1+)

Arizona Branch
Central Illinois Branch
Central Ohio Branch
Chicago Branch
Florida Branch
Louisiana Branch
Nebraska Branch
Palms to Pines Branch
Texas Branch

2011 Individual Annual Contributors

Supporter Contributors

(\$5,000–\$9,999)

Shannon Stutler

Platinum Contributors

(\$500–\$1,999)

Deb Benner
Dave Bienus
Dennis Brown
Cindy Buckmaster
Ray Butler
Rich Cavallaro
Bill Clarke
Susan Desmond
Steve Durkee
Brian Ebert
Paige Ebert
Nancy Figler
Rich Foyle

Craig Frisk
Gary Goldberg
Bob Jackson
Lisa Kelly
Tim Martin
Elizabeth Pelletier
Kathy Smiler
Katrina Taylor
Stacy Wells

President Contributors (\$100–\$499)

Cathie Adams
Michelle Adams
Janice Basham
Krystal Bean
Taylor Bennett
Thomas Boerschinger
Jennifer Bradley
Mark Butler
Chris Carter
Tom Chatkupt
Melissa Cliett
Alexis Clough
Regina Correa-Murphy
Sharon Cugle
Peggy Danneman
Theresa Digiulio
Deb Donohoe
Shawn Dooley
Fred Douglas
Amy Dryman
Steve Durkee
Mike Esmail
Jeetendra Eswaraka
Margaret Fausto
Paul Fausto
Larry Fisher
Kim Froeschl
Montip Gettayacamin
Vicki Giroffi
Karol Godwin
Tom Goodwin
Johnetta Gray
Leigh Haas
Gwen Haggett
Hugh Harroff
Tonja Henze
Jack Hessler
Kim Hildreth
Richard Huneke
Amy Ingraham
Lynn Jackson
Todd Jackson
Kellie Jensen
Robin Kavanaugh
Kanchana Kengkoom
Chris King
Kyrsten Koebach
Lynn Lambert

Two Companies Receive Foundation Plaques

TotalMRO and IITC joined an elite list of Foundation supporters by receiving the Foundation donor plaque at the 62nd AALAS National Meeting in San Diego.

Companies, institutions, and branches that support the Foundation at the Platinum level or higher (\$500+ annual contribution) for the first time receive a plaque to recognize their contributions to the Foundation.

Plaque recipients receive a plaque tab in each subsequent year they support the Foundation at the Platinum level or higher.

Amber Lange
Valeri Lansford
Maria Lehto
Tracy Lewis
Angela Malaney
Angie Mannone
John McCutchen
Todd McDaniel
Patrick McDermott
Michael McGarry
Chris Medina
Robin Miller
Scott Mischler
Joseph Newsome
Tim O'Bryan
Tara Ooms Konecny
Janet Osborne
Lisa Osborne
Markeya Owens
Angela Pallone
Tensie Palmer
Kathleen Parton
Eden Paster
Cindy Pekow
Richard Peplow
Scott Perkins
Stacy Pritt
Lisa Rehm
Marcie Rohan
Kim Saunders
Kim Scamardo
Brenda Sears
Craig Sem
Pat Sikes
J David Small
Joanne Smith
Nicole Snell
Wendy Sparkman
Dennis Stark
Harold Stills
Mark Suckow
Greg Sykes
James Taylor
Matt Taylor
Jodi Ternes
Gail Thompson
Katja Tonsky

Ann Turner
Lynne Walsh
Lane Watkins
Robert Weichbrod
Trey Wills
Teresa Woodger
Lillian Zalduondo

Advocate Contributors (\$1–\$99)

Jenni Adams
Lori Alston
Leanne Alworth
Paula Bains-Vallee
Melvin Balk
Samm Bartee
Doreen Bartlett
Megan Bathurst
Melissa Bevan
Rachel Blea
Jaya Bollinini
Joy Brikerhoff
Bill Britz Jr.
Joseph Browning
Joan Cadillac
Jonathan Caigas
Melissa Card
Deborah Caruso
Ricardo Cepeda
Bonnie Cerven
Susan Chapman
Sonja Chou
JoeAnn Croxford
Bob Dauchy
Erin Dauchy
Rachel Delgado
David DeLong
Dave Disselhorst
Sonia Doss
Julia Drake
Karina Drew
Dee Drye
Lynell Dupepe
Garrett Field
Patricia Foley
Laura Gee
Donna Goldsteen

Giving to the Foundation

Show your dedication to your profession by volunteering your time or making a donation to the AALAS Foundation. Here are a variety of ways you can help advance laboratory animal science:

Volunteer Your Time

- Conduct a public outreach program in your community
- Serve on the Foundation Board of Directors
- Participate in career day at your local school
- Share your passion with AREA Program students
- Serve on the National Meeting Committee, Branch Relations Committee, or Projects Committee

Participate in the AALAS Foundation Auction

- Donate an item or participate in the AALAS Foundation Silent and Live Auction

Make a Donation

- Make a one-time donation or five-year pledge commitment
- Donate in honor of a loved one, co-worker, companion animal, or research animal
- Make a planned gift of stock or life insurance
- Give through the United Way (reference #060730)
- Encourage your employer or branch to give to the Foundation
- Participate in employee matching programs

Advocate Contributors (\$1-\$99) continued...

Tamara Goodman Kuhel
Sherri Goss
Michael Gregory
Cheryl Griese
Christina Gross
Bob Gump
Mary Hagler

Rob Hamm
Victoria Hardy
Anna Herrera
Nick Hidell
Tim Hidell
Annette Hildabrand
Brenda Hill
Ralph Hornickel
Susan Iliff
Christine Jackson

Paula Johnson
Estella Jones
Jacky Judd
Cynthia Kloster
Robert Krusas
George Lantrip
Malika Larabi
Lisa Lefebvre
Donna Lewis
Andrea Loewen
Debra Lust
Pamela Mack
Anne MacLarty
Arthur MacLarty
Sean Maguire
Veronica Maldonado
Leslie Martin-Regalado
Mike Mathy
Alice McVey
Letty Medina
Natasha Melfi
Elizabeth Mihalchick
Eileen Morgan
David Mungo
Peggy Murphy-Hackley
Caroline Murray
Holli Myers
Kristin Newkirk
Gay O'Brien
Kevin O'Hair
Paul Peterson
Karimah Polk

Joan Reilly
Laura Ruhl
Theresa Schnell
Beth Schultz
James Sears
Anne Shuman
Andrew Sieling
Larkin Slater
J Paul Spurlock
Aiyasami Sreenivasan
Jeffrey Stanton
Pamela Straeter
Socorro Tauyan
Tasha Thomas
Nancy Tobin
Phuong Tran
Jane Wall Lacher
Debra Weisbecker
James Welch
Chandra Williams
Jackie Wright
Joanne Zahorsky-Reeves

Foundation's National Meeting Fundraising

The fundraising efforts at the 62nd AALAS National Meeting in San Diego generated \$47,283 to support the Foundation's public outreach efforts! Thank you to all who participated in the 2nd Annual TotalMRO Golf Outing, the 22nd Annual STERIS 5K Run/Walk and Silent and Live Auction. Special thanks also to those who made a donation to the Foundation and attended the Charles River Appreciation Reception.

We also thank the National Meeting committee members, booth volunteers, and appreciation reception volunteers. We appreciate all of your efforts to make this event successful.